

St Mary's, Isleworth

Newsletter for

Friday 10th March 2017



OfSTED

As you know we had Ofsted visit the school on Tuesday. I would like to thank you all for supporting the school so well both on the day and everyday. It was a challenging but enjoyable day. The ParentView results are amongst the highest seen as was the number of you taking part - thank you. You can see these for yourself on the next few pages.

The report has gone for quality assurance and will be back with the school when it's been checked, checked and checked again! We have been told that there will be a significant delay due to a back log of reports at OfSTED. Once we've received the report we will then be able to share the results with you. **Please don't worry if it's some weeks or months before it's published.**

What I can tell you is that your children were very well behaved and the staff were all very proud of them.

I will keep you updated but at present the content of the report remains confidential.

ST PATRICK'S DAY MENU

On Friday 17th March we will celebrate St Patrick's Day with a special menu. We are unable to change the choices on ParentPay so please remember when booking, that the main meal (M) will be Tuna, Sweetcorn and Cheese Stuffed Jacket Potato and NOT Fish & Chips, the vegetarian option (V) will be Irish Vegetable Stew with fresh Granary Bread and NOT Italian Style Vegetable Frittata and the alternative option (A) will be Jacket Potato with crunchy Cheese Coleslaw and NOT Keema Mattar.

Ofsted Parent View



Parent View results

Search results - St Mary's Catholic Primary School, Isleworth

St Mary's Catholic Primary School, Isleworth
South Street
Isleworth
TW7 7EE

URN: **102528**

Telephone number: **02085607166**

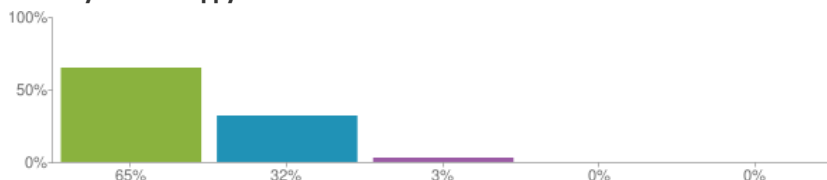
Fax number: **02082328820**

Pupils on the roll: **357**

Responses for this school: **103**

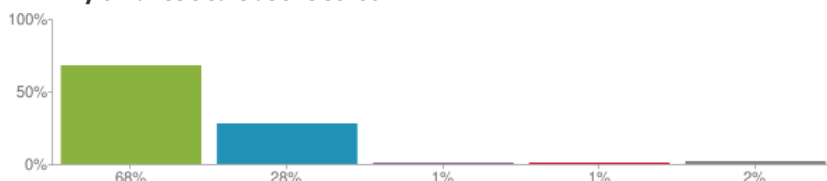
[View inspection reports](#)

1. My child is happy at this school



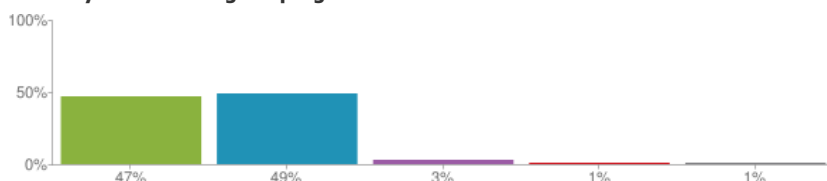
Figures based on **103** responses up to 07-03-2017

2. My child feels safe at this school



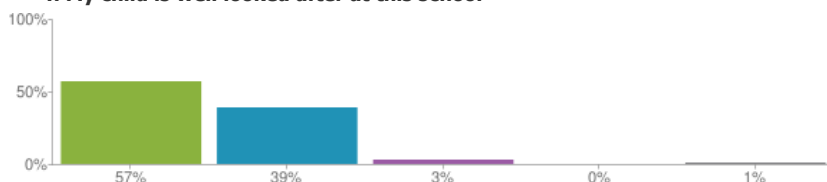
Figures based on **103** responses up to 07-03-2017

3. My child makes good progress at this school



Figures based on **103** responses up to 07-03-2017

4. My child is well looked after at this school

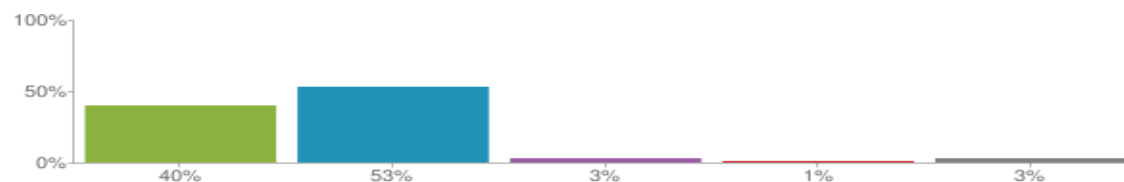


Figures based on **103** responses up to 07-03-2017

5. My child is taught well at this school

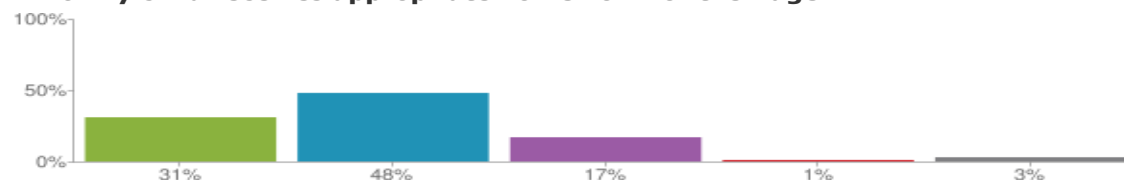


Parent View results



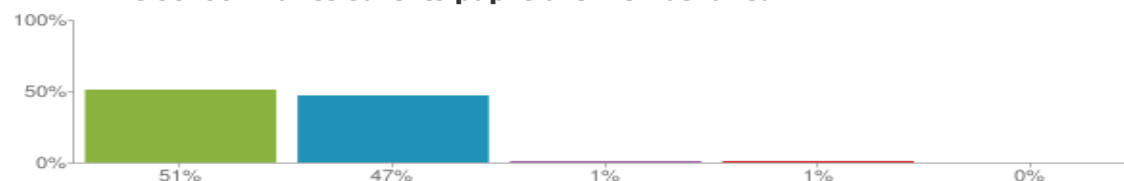
Figures based on **103** responses up to 07-03-2017

6. My child receives appropriate homework for their age



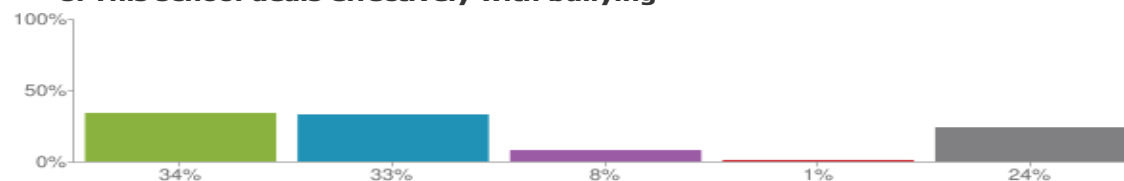
Figures based on **103** responses up to 07-03-2017

7. This school makes sure its pupils are well behaved



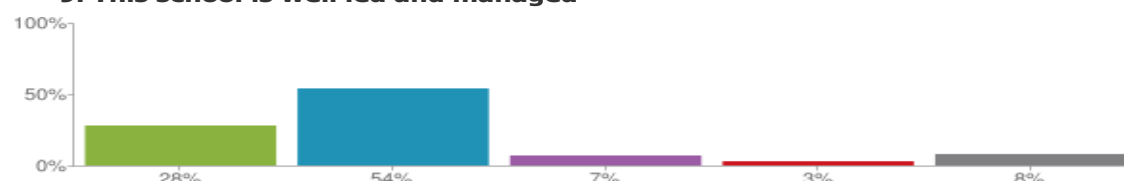
Figures based on **103** responses up to 07-03-2017

8. This school deals effectively with bullying



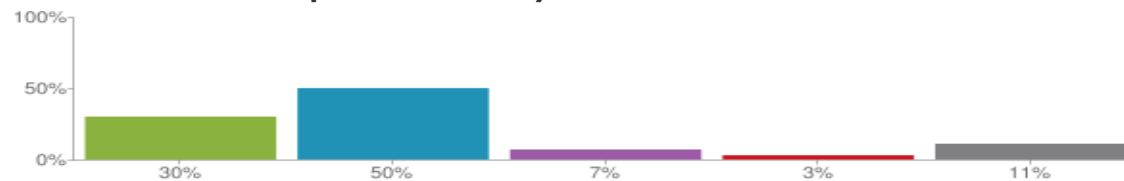
Figures based on **103** responses up to 07-03-2017

9. This school is well led and managed



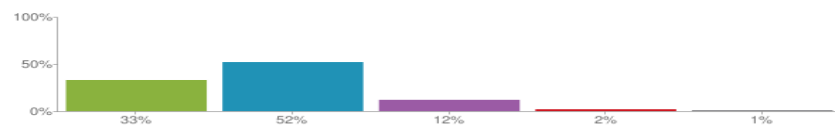
Figures based on **103** responses up to 07-03-2017

10. This school responds well to any concerns I raise

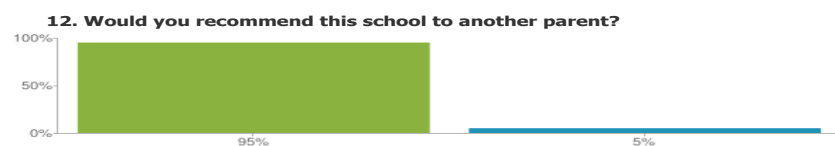


Figures based on **103** responses up to 07-03-2017

11. I receive valuable information from the school about my child's progress



Figures based on **103** responses up to 07-03-2017



Figures based on **103** responses up to 07-03-2017



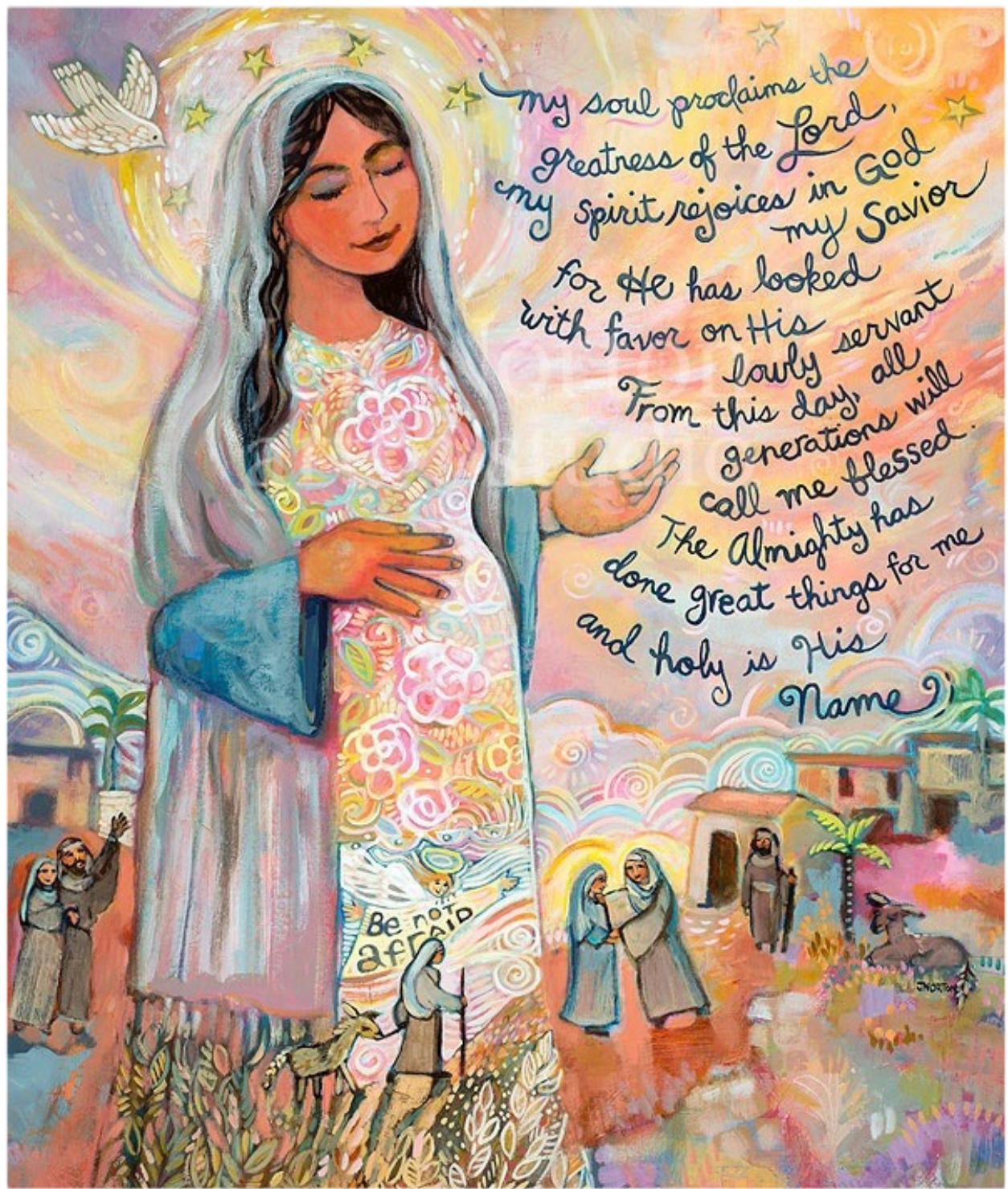
NOTE: More than one parent/carer can complete the Parent View questionnaire so the results may show more respondents than pupils attending the school

Sharing and bookmarks

CLASS ATTENDANCE

27th Feb – 4th March 2017

SQUIRRELS	96.15%	<p>Top Class 1L FANTASTIC!</p> <p>Our Attendance Target is 96%</p>
BUMBLEBEES	95.33%	
DOLPHINS	94.14%	
1L	99.67%	
1P	99.33%	
2C	96.00%	
2F	99.00%	
3L	97.33%	
3M	97.24%	
4E	96.00%	
4S	94.84%	
YEAR 5	95.76%	
YEAR 6	96.88%	



And Mary said: My soul proclaims the greatness of the Lord and my spirit rejoices in God my Saviour because he has looked upon the humiliation of his servant. Yes, from now onwards all generations will call me blessed, for the Almighty has done great things for me. Holy is his name, and his faithful love extends age after age to those who fear him.

He has used the power of his arm, he has routed the arrogant of heart. He has pulled down princes from their thrones and raised high the lowly. He has filled the starving with good things, sent the rich away empty. He has come to the help of Israel his servant, mindful of his faithful love according to the promise he made to our ancestors of his mercy to Abraham and to his descendants for ever.

St Mary's Catholic Primary School - New Junior Building
Utilities work Programme March - April 2017

Weekly schedule	Activity
	-
Week commencing 27th February	<ul style="list-style-type: none"> - Install remainder of water mains and hydrant pipework - Thames Water Bye-Law inspection of pipework - Chlorination of all pipework
Week commencing 6th March	<ul style="list-style-type: none"> - New electrics main, installation of duct and cables - New gas main, installation of duct and pipework - Data, Intruder alarm & Fire System links (cables) to main school building
Week commencing 13th March	<ul style="list-style-type: none"> - Backfill all trenches & reinstate surfacing
Week commencing 3rd April	<ul style="list-style-type: none"> - Thames water connecting NEW water supply to school, digging of trench across road outside school and laying pipework, commissioning the whole system - Upgrade of existing gas meter to a larger one
Week commencing 10th April	<ul style="list-style-type: none"> - Disconnect old water supply - Adapt new water supply to church hall - Disconnect old water supply to school buildings and connect new supply
To be confirmed	<ul style="list-style-type: none"> - Resurfacing of the whole school Car Park
	-
<p>There continues to be no parking during the work, there is only access for deliveries and emergency access. Pedestrian access for pupils and adults is via the small gate near the Church.</p>	

MARCH

M	T	W	T	F	S	S
13 8am Selected Y3 & Y4 Springboard Maths Piano lessons pm (small groups) Spanish Club Y1 & 2 Lego Club	14 Guitar lessons pm (small groups) Athlete London KS1 & KS2 Football	15 8am Selected Y4 Springboard Maths 9am Y4 Swimming Y6 Visit to Marble Hill, Archaeological Dig Violin lessons pm (small groups) Professor Bubbleworks Science Club Italian Club Code Club	16 8am Selected Y3 & Y6 Springboard Maths 9am Y5 & 1L Mass in Church Guitar lessons pm (small groups) Y3 Class Violin (pm) Athlete London Olympic Sports Club 3.15-5.30pm PTA Film Night 'The Jungle Book'	17 Y2 Class Violin (pm)	18	19
20 8am Selected Y3 & Y4 Springboard Maths 9am 2F Visit to BFI Imax – 'Fly Me to the Moon' Piano lessons pm (small groups) 2.30-5pm Y6 Plaque Ceremony, Syon House Spanish Club Y1 & 2 Lego Club	21 Last Guitar lessons pm (small groups) Last Athlete London KS1 & KS2 Football	22 8am Selected Y4 Springboard Maths 9am Y4 Swimming 9am 2C Visit to BFI Imax – 'Fly Me to the Moon' Violin lessons pm (small groups) Last Professor Bubbleworks Science Club Last Italian Club Last Code Club 8pm Y6 Parents' Meeting for Rome Trip	23 8am Selected Y3 & Y6 Springboard Maths 9am 3L & 3M Mass in Church Last Guitar lessons pm (small groups) Y3 Class Violin (pm) Last Athlete London Olympic Sports Club	24 9am – 3.30pm Y5 Enabling Enterprise Visit to Oliver Wyman Y2 Class Violin (pm) PTA International Runway Family Event (Time TBC)		
27 8am Selected (Last Y3) & Y4 Springboard Maths Last Piano lessons pm (small groups) Last Spanish Club Last Y1 & 2 Lego Club	28 Last Clarinet lessons 9am NSPCC 'Pants' Presentation to Parents	29 8am Selected Y4 Springboard Maths (Last 4S) 9am Last Y4 Swimming	30 8am Selected Y6 Springboard Maths 9.15am Y5 Easter Assembly (Y5 Parents welcome)	31 SCHOOL CLOSSES 2.00PM	1	2
3	4	5	6	7		
10	11	12	13	14		
18 EASTER MONDAY	19 SCHOOL RETURNS 9am PTA Happy Bags Collection	20 8am Selected Y4E Last Springboard Maths	21 8am Selected Y6 Springboard Maths 9am 4S & 2C Mass in Church	22	23	24
					15	16 EASTER



Pantosaurus is coming to St Mary's!

All parents are invited to come and meet Pantosaurus and members of the NSPCC who will be in school on Tuesday 28th March. They will be running a session for parents from 8:55am in the school hall. All welcome!

<https://www.nspcc.org.uk/globalassets/documents/advice-and-info/underwear-rule-guide-for-parents.pdf>

As part of our focus on private parts you should expect and be prepared for your child to question you about their body and the different parts of their body. The best advice from experts is that even very young children learn and use the correct names for the parts of their bodies.

The NSPCC's advice is that you should weave conversations about keeping safe into everyday activities and bring up the topic often but a little at a time. In doing this, children get consistent messages which help them to keep themselves safe.

Have a look at the NSPCC resources and enjoy singing along to Pantosaurus too!
You can find the song here:

<https://www.youtube.com/watch?v=fn6AVSZk008>

TALK PANTS AND STAY SAFE

Join thousands of families talking PANTS –
and help keep children safe

Talking PANTS is a simple and memorable way for families to teach children how to stay safe. There are child-friendly materials and guides for adults. There's even a song. You can find all you need at nspcc.org.uk/pants

PRIVATES ARE PRIVATE
ALWAYS REMEMBER YOUR BODY BELONGS TO YOU
NO MEANS NO
TALK ABOUT SECRETS THAT UPSET YOU
SPEAK UP, SOMEONE CAN HELP



NSPCC

©2018 NSPCC. Registered charity England and Wales 218401, Scotland SC037171, 120161303. Illustrations by Jamie Heath.

Supported by
**London Borough
of Hounslow**

LEARN PANTOSAURUS' FIVE EASY RULES FOR STAYING SAFE

PRIVATES ARE PRIVATE

Your underwear covers up your private parts and no one should ask to see or touch them. Sometimes a doctor, nurse or family members might have to. But they should always explain why, and ask you if it's OK first. Remember, what's in your pants belongs only to you.

ALWAYS REMEMBER YOUR
BODY BELONGS TO YOU

No one should ever make you do things that make you feel embarrassed or uncomfortable. If someone asks to see or tries to touch you underneath your underwear say 'NO' – and tell someone you trust and like to speak to.

NO MEANS NO

You always have the right to say 'no' – even to a family member or someone you love. You're in control of your body and the most important thing is how YOU feel. If you want to say 'No', it's your choice.

SPEAK UP, SOMEONE
CAN HELP

It's always good to talk about stuff that makes you upset. If you're worried, go and tell a grown up you trust – like a family member, teacher or one of your friend's parents. They'll say well done for speaking out and help make everything OK. You can also call Childline on **0800 1111** and someone will always be there to listen.

TALK ABOUT SECRETS
THAT UPSET YOU

There are good secrets and bad secrets. If a secret makes you feel sad or worried, it's bad – and you should tell an adult you trust about it straight away.

Remember all of these
rules and they'll help
you stay safe, just like
Pantosaurus



©2018 NSPCC. Registered charity England and Wales 218401 and Scotland SC037171, 120161188. Illustrations by Jamie Heath.

HOLIDAY DATES FOR SCHOOL YEAR 2017 – 2018

**Revised Dates for
17-18**



Autumn Term begins

Monday 4th September 2017 INSET DAY

Return to school

Tuesday 5th September

Half Term Week

school closed Monday 23rd – Friday 27th October 2017

Return to school

Monday 30th October 2017

Christmas Holiday

School closes at 2 p.m. on **Wednesday 20th December 2017**



Spring Term begins

Friday 5th January 2018 INSET DAY

Return to school

Monday 8th January 2018

Half Term Week

school closed Monday 12th – Friday 16th February 2018

Return to school

Monday 19th February 2018

Spring Term Holidays

School closes at 2 p.m. on **Thursday 29th March 2018**



Summer Term begins

Monday 16th April 2018

National Bank Holiday

school closed

Monday 7th May 2018

National Bank Holiday

school closed

Monday 28th May 2018

Half Term week

school closed Tuesday 29th May – Friday 1st June 2018

Return to school

Monday 4th June 2018

End of school year

School closes at 2 pm on **Friday 20th July 2018**

Monday 23rd July – INSET Day



LET'S
WALK TO
SCHOOL

WOW – the year-round walk to school challenge

Badge design competition 2017

This year's theme is: Walk the Americas

Join one of the UK's largest art competitions this winter. From the dramatic landscapes of Canadian national parks, through Brazilian rainforests teeming with life, down to the icy glaciers in Southern Argentina; the Americas have lots on offer. Help us celebrate the nature, culture and history of these continents by asking your pupils to design a badge that captures a specific feature of the region.

The 11 winning designs will be turned into more than 400,000 badges and feature across next year's WOW challenge. With more than 120,000 entries each year, will one of your pupils have a winning design?

What is WOW?

Pupils who walk to school at least once a week are rewarded with a monthly badge, helping build healthy habits for a lifetime. The badges are made in the UK from recycled yoghurt pot material. For more information on how your school can get involved with WOW visit www.livingstreets.org.uk/walktoschool.

HOW TO ENTER

STEP 1: Photocopy and give out copies of the template overleaf to each class.

STEP 2: Collate all of your pupils' entries and choose the **BEST THREE** designs to enter into the competition.

STEP 3: Send your best three designs to us via: **POST:** Walk to School, Living Streets, 4th Floor, Universal House, 88-94 Wentworth Street, London, E1 7SA
EMAIL: walktoschool@livingstreets.org.uk with the subject line: 'Badge competition entry 2017'.

THE PRIZES

The 11 winning designs will be made into 2017-18 WOW badges and the winners will receive:

- A year's supply of WOW resources for their school, up to the value of £500.
- A WOW trophy and goody bag.
- Localised press coverage.

Terms and conditions apply. Please visit our website for more details.
www.livingstreets.org.uk/badgecomp2017



We are Living Streets, the UK charity for everyday walking.

#WALKTOSCHOOL LIVINGSTREETS.ORG.UK/WALKTOSCHOOL **f** [LIVINGSTREETSUK](https://www.facebook.com/LivingStreetsUK) **t** [@LIVINGSTREETS](https://twitter.com/LIVINGSTREETS)

Living Streets (The Pedestrians' Association) is a Registered Charity No. 1108448 (England and Wales) and SC039808 (Scotland). Company Limited by Guarantee (England & Wales). Company Registration No. 5368409. Registered office 4th Floor, Universal House, 88-94 Wentworth Street, London E1 7SA.

LIVING
STREETS

LET'S
WALK TO
SCHOOL

WOW - the year-round walk to school challenge

Badge design competition 2017

Design your own WOW badge.

This year's theme is: WALK THE AMERICAS

Top tips for your designs:

- We are looking for big, bold and colourful designs.
- Avoid adding too much detail as the badges are less than 3cm high. Simple designs work best.
- Winning designs will be digitally recreated, so pupils can use pencil, crayons or pens.
- Avoid adding trademarks, logos, images of Strider or lots of people.

Here are a few examples to get you started:

- Animals (e.g. Alaskan brown bear, Peruvian llama).
- Manmade landmarks (e.g. Machu Picchu, Peru; Empire State Building, New York City).
- Natural landscapes (e.g. The Andes; Grand Canyon).
- Historical figures, events and civilisations (e.g. Aztecs, Mexico; Abraham Lincoln, American Civil War).
- Culture e.g. music and food (e.g. Maple syrup, Canada; Tango dancing, Argentina).
- Indigenous communities / peoples (e.g. Quechua, Peru, Bolivia, Ecuador; Mapuche, Chile).

For full details on how to enter the WOW badge design competition, visit www.livingstreets.org.uk/badgecomp2017

WIN
a year's supply
of WOW resources
for your school
up to the value
of £500

Where
will the
Americas
take you?



Pupil name:

Age:

School name and address:

School email:

Where did you hear about the competition?

School telephone:

Local Authority/Academy trust:

Please tell us what you have drawn and why:

Which country does your design represent?

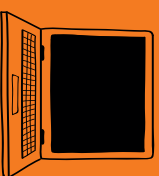
LOVE SCHOOL Meals



Love School Meals is how you can keep up-to-date with everything you need to know about our delicious and nutritious school meals.

Our monthly e-newsletter provides information about what's new on the menu each term, tips on tackling fussy eaters, information about our Beyond the Kitchen educational activities and so much more. We even run competitions so you have a chance to win great prizes too!

How do I sign up?



Register your details quickly and easily at www.lovesschoolmeals.co.uk. Oh, and don't forget to search **Love School Meals** on Facebook and like our page and follow us on Twitter **@lovesschoolmeals**



Need more information?

If you would like more information on school meals please contact us on:



@LOVESCHOOLMEALS
<http://lovesschoolmeals.co.uk/hounslow/>

Chartwells
EAT LEARN LIVE



Chartwells
EAT LEARN LIVE

Here's the menu for the Spring Term.

All infant children have a free cooked school lunch everyday. Remember you still need to use ParentPay to record your child's choice.

Any Junior child can have a school dinner on any day they want.

Dinners cost £2.20 and you will need to make your child's choice using ParentPay and make sure that your account is in credit. You can choose a dinner for your child up to midnight on the evening before the meal is cooked. If your child normally has sandwiches they can still have a dinner on as many days a week as they want. We do not require any notice of the change over.

Week one

02/01 30/01 06/03

Choose a main meal...

Beef Lasagne (M)
Creamy Beefy Carbonara, Borlotti Beans & Mushroom with Sweetcorn v
Bacon, Red Onion & Cheese Stuffed Jacket Skirts (A)

on the side...

Brains Broccoli
Casey Carrot
for dessert...
Wholenmeal Apple & Cinnamon Crumble & Custard

Choose a main meal...

Chicken, Tomato, Sweet Pepper and Vegetable Herby Pasta (M)
Mozzarella & Tomato Pizza & Chop Chop
Casey Carrot & Zingy Ginger Soup with **Choose both (A) meal...**

on the side...

Barry Baked Beans
Chop Chop Salad
for dessert...
Silvertops Yummy Yoghurt with Melon & Peaches

Tuesday

Choose a main meal...

Roast Pork with Bud's Crispy Spuds & Gravy (M)
Quorn Roast with Bud's Crispy Spuds & Gravy v
Egg Mayo & Cress Petit Pain (A)

on the side...

Casey Carrots
Braised Leeks
for dessert...
Boss Banana & Sticky Toffee Pudding

Wednesday

Choose a main meal...

Shepherd's Pie (M)
Vege Shepherdess Pie v
Tomato & Basil Soup with Giant Herby Croustons v (A)

on the side...

Cabbage
Sweetcorn
for dessert...
Chocolate Sultana Crispe

Thursday

Choose a main meal...

Tuna Pasta Bake (M)
Chicken & Vegetable Curry & Rice v
Bud'n Juid Spud with a choice of fillings (A)

on the side...

Barry Baked Beans
Garden Peas
for dessert...
Tutti Frutti Cake & Custard

Friday

We have a fresh salad bar available daily

We Bake Bread Daily

If your child receives or needs a special diet or allergen menu, please speak to your catering manager or contact us
(M) Main Meal (V) Dishes Suitable for Vegetarians (A) Alternative Menu Choice



Week two

09/01 06/02 13/03

Choose a main meal...

Pork Sausage (M)
Vege Sausage v
Lightly Spiced Carrot Soup with Gherany Bread Sticks v (A)

on the side...

Home Baked Sweet Potato Wedges
Barry Baked Beans
for dessert...
Silvertop's Cool Ice Cream

Choose a main meal...

Spagheti Lamb Bolognaise (M)
Mild Mexican Chili with Soft Taco v
Bud'n Juid Spud with Tuna Mayo (A)

on the side...

Brains Broccoli
Sadie Sweetcorn
for dessert...
Silvertop's Yummy layered Fruit Yoghurt

Choose a main meal...

Roast Chicken, Roast Potatoes & Gravy (M)
Butterbean Crumble with Bud's Crispy Spuds v
French style Onion Soup with a large Cheese Croustons (A)

on the side...

Casey Carrots
Cauliflower
for dessert...
Honey & Vanilla Milkshake

Choose a main meal...

Sweet'n sour Chicken served on Wholenmeal Rice (M)
Mega Mozzarella Pizza with Red Cabbage Colelaw on the side v
Bud'n Juid Spud with Cheese & Baked Beans (A) **main meal...**

on the side...

Barry Baked Beans
Green Beans
for dessert...
Creamy Rice Pudding with Sultanas

Choose a main meal...

Fish & Chips & Ketchup (M)
Italian Style Vegetable Frittata, Herby Garlic Bread Wedge & Ketchup v
Keena Matar (lightly spiced veggie mince with peas) on Basmati Rice v (A)

on the side...

Sweetcorn
Chop Chop Crunchy Salad
for dessert...
Orange Chocolate Brownie

Week three

16/01 20/02 20/03

Choose a main meal...

Pork Bangers on Mash Mountain & Gravy (M)
Vege Bangers on Mash Mountain & Gravy v
Bud'n Juid with a Choice of Fillings v (M)

on the side...

Barry Baked Beans
Green Beans
for dessert...
St Clement's Cookie

Choose a main meal...

BBQ Turkey Balls with Wholenmeal Rice (M)
Pasta Pack's Mac'n Cheese Macaroni Cheese v
Pea, Potato & Spinach Soup with an Oaty Roll v (A)

on the side...

Brains Broccoli
for dessert...
Silvertop's Yoghurt with a Warm Berry Compote

Choose a main meal...

Roast Beef, with Bud's Crispy Spuds & Gravy (M)
Sweet Potato and Squash Stey served with Bud's Crispy Spuds v
Tuna Sweetcorn Wrap (A)

on the side...

Mixed Fresh Vegetables
for dessert...
Fruit Jelly

Choose a main meal...

Chicken Tikka Massala & Basmati Rice (M)
Vegetarian Pasta Bolognaise v
Spiced Chick Pea & Coconut Soup with Naan Bread (A)

on the side...

Green Beans
Diced Carrots
for dessert...
Chocolate Cake & Chocolate Custard

Choose a main meal...

Fish Fingers, Chips & Ketchup (M)
Chinese Vegetable Noodles v
Bud'n Juid Spud with Grated Cheese (A)

on the side...

Barry Baked Beans
Garden Peas
for dessert...
Wholenmeal Fruit Crumble & Custard

Week four

23/01 27/02 27/03

Choose a main meal...

Beef Burger in a Bun with Wedges (M)
Vege Burger in a Bun with Wedges v
Bud'n Juid Spud with a choice of fillings (A)

on the side...

Barry Baked Beans
Garden Peas
for dessert...
Silvertops Lemonicious Yoghurt with a Crunchy Biscuit Top

Choose a main meal...

Mince Lamb & Tomato Pasta (M)
Vegetarian Lasagne v
Sweet Potato & Casey Carrot Soup with Wholegrain Bread Fingers (A)

on the side...

Green Beans
Broccoli
for dessert...
Chocolate Cookie

Choose a main meal...

Roast Turkey with Bud's Crispy Spuds & Gravy (M)
Cauliflower, Potato Bake with Bud's Crispy Spuds v
Crunchy Cheese Tortilla Wrap (A)

on the side...

Cabbage
Cauliflower
for dessert...
Raisin & Apple Flapjack

Choose a main meal...

Sadie's Chinese Chicken Noodles (M)
Caramelised Red Onion, Spinach, Tomato and Cheese Tart with Cous Cous v
Creamed Spinach Soup & Wholenmeal Bread (A) **main meal...**

on the side...

Casey Carrots
Broccoli
for dessert...
Fresh Fruit Salad

Choose a main meal...

Salmon Goujons & Crushed New Potatoes (M)
Mozzarella & Tomato Pizza with Pepper & Sweetcorn Topping with Apple Slaw v
Dhal & Basmati Rice v (A)

on the side...

Baked Beans
Sweetcorn
for dessert...
Pineapple & Carrot Cake & Custard

There is a vegetarian choice **every day**... and don't forget that salad is available **daily**.

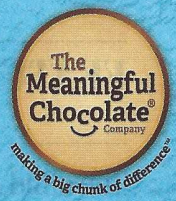
Keep yourself topped up with water – it will help you concentrate **all day long**.

If you don't fancy dessert, you can **always** enjoy fresh fruit or yoghurt.





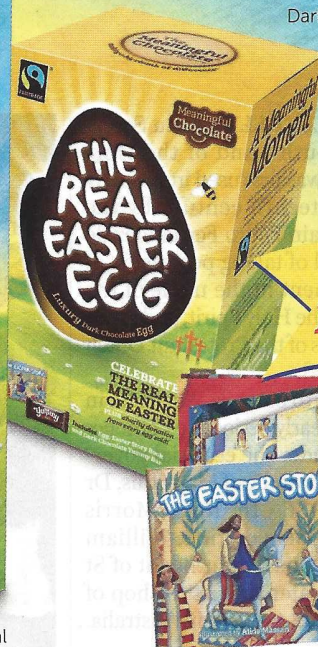
The egg that shares the Easter story



Special Edition



Original



Dark

This year's Easter story

Original (RRP £3.99)

A fresh new redesign. Includes an Easter story activity book, illustrated by award winning artist, Alida Massari, a high quality milk chocolate egg (125g) & Yummy Bar (25g)

Dark (RRP £5.50)

An egg made from premium dark Fairtrade chocolate (155g) with dark Yummy Bar (25g) and Easter story activity book.

Special Edition (RRP £8.50)

Contains a high quality milk chocolate egg (200g), an Easter traditions booklet and orange milk chocolate bar (80g).



TRAIDCRAFT
Fighting poverty through trade

A 24 page Easter story-activity book illustrated by Alida Massari is included in the Original and Dark eggs.

Out of the 80 million Easter eggs sold in this part of the world every year, The Real Easter Egg is the only one which has an Easter story book in the box, is made of Fairtrade chocolate and makes a donation to charity from its sales.**

The egg that shares the Easter story

The Real Easter Egg was launched in 2010. It was a real struggle as all the supermarkets turned it down at first. To date, we have sold more than one million eggs with 750,000 of these sent through the post directly to churches and schools. Not only has there been an increase in Fairtrade chocolate sales, but nearly £250,000 has been donated to charity.

To allow us to continue to make The Real Easter Egg, we need people to switch and buy. Don't forget, delivery is free if you spend more than £45 and order by 6th March 2017.

How your church can be involved

Direct sales are very important for our company to trade. So we hope you will join the campaign and encourage people to buy directly from us. You can download resources or buy from us today by visiting our website www.realeasteregg.co.uk

**There is a charitable donation for every 150g egg sold.

Download marketing resources or buy from our website at:

www.realeasteregg.co.uk



How to order

FREE DELIVERY

if ordered before 6th March 2017*

Pay online by card - The simplest way

to pay is to visit our online shop at www.realeasteregg.co.uk

Payment by cheque - Complete the form below and return to:

The Meaningful Chocolate Company, 11a Eagle Brow, Lymm, WA13 0LP.
Cheques payable to 'The Meaningful Chocolate Company Ltd'.

Delivery Address:

Title: First Name: Surname:
Tel. No: (Daytime) Email:

	No. of Eggs	Total
Original Real Easter Egg (150g) (£3.99 each must be ordered in multiples of 6) £23.94		
Special Edition Real Easter Egg (280g) Can be ordered in singles, each egg £8.50		
Dark Real Easter Egg (180g) (£5.50 each must be ordered in multiples of 6) £33.00		
Postage & Packaging See terms and conditions below	FREE* or £4.95	
Grand Total		

*Free delivery on orders over £45 and received by 6th March.